



G9781-150 Gas Boiling Pan



Short Form Specification

Unit to be Falcon F900 Series gas boiling pan having a 150 litre capacity pan to be supplied upon adjustable feet.

Burner with flame failure device as standard to guard against being extinguished accidentally. Exterior panels are Scotch Brite finish stainless steel.

The hob will be constructed from 2mm 304 grade stainless steel. Hobs will be laser cut with right-angled edges to allow joining of units with no gaps between hobs. Exterior panels are Scotch Brite finish stainless steel. Control knobs to be marked showing gas positions and to have a bezel behind each knob to prevent water ingress.

Key Features

- 150 litre capacity stainless steel pan
- Integrated water faucet as standard
- Counter-balanced lid
- Dual pan protects pan contents from direct heat
- Supplied upon adjustable stainless steel feet
- 2mm thick 304 grade stainless steel hob
- Laser cut hob allows edge to edge joining of units
- Stainless steel external panels with Scotch Brite finish
- For use with natural, propane and butane gas. Conversion kit supplied with each unit
- Dynamic Link System Compatible



Integrated linking system allows quick and easy installation to create a continuous cookline.

UK Patent No. 2540131

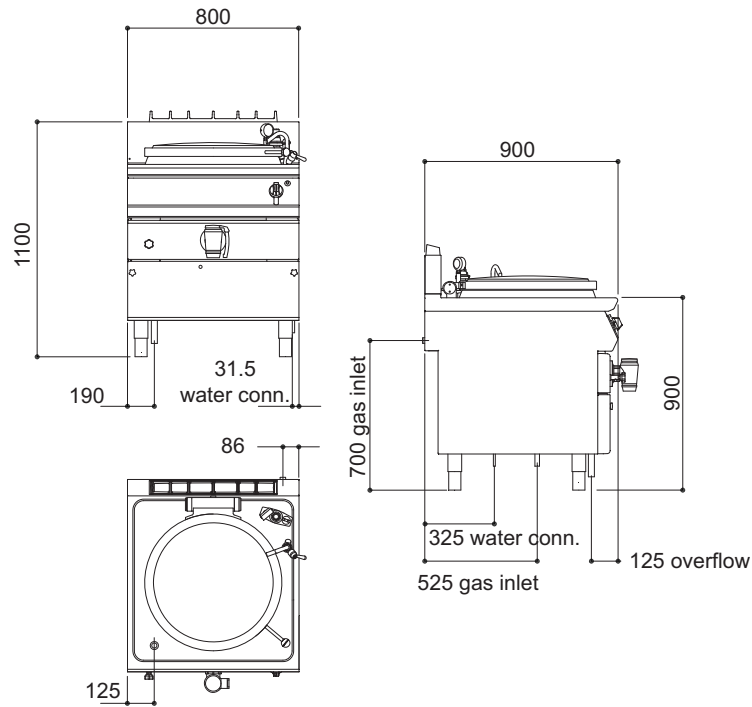
Optional Accessories

- Front hob rail
- Rear blanking plate
- Vented front kick strip
- Side hob extension
- Side kick strips RH/LH
- Castors



G9781-150 Gas Boiling Pan

Model Dimensions (mm)



Specification Details

	Natural Gas	Propane Gas	Butane Gas
Total rating (kW - Nett)	21	21	21
Total rating (btu/hr - gross)	78,820	78,820	78,820
Inlet size	R1/2"	R1/2"	R1/2"
Flow rate	2.22m ³ /hr	1.65kg/h	1.65kg/h
Inlet pressure (mbar)	20	30 - 36	28
Operating pressure (mbar)	16 - 25	34 - 45	20 - 25
Burner rating (kW - Nett)	21	21	21
Burner rating (btu/hr - gross)	78,820	78,820	78,820
Water connection	3/4" BSP	3/4" BSP	3/4" BSP
Water pressure (kPa)	50 - 300	50 - 300	50 - 300
Weight (kg)	150	150	150
Packed weight (kg)	175	175	175
Packed dimensions (mm)	870mm (w) x 1070mm (d) x 1270mm (h)		

Installation Note:

Please consult local legislation with regard to installation of cooking equipment.

